

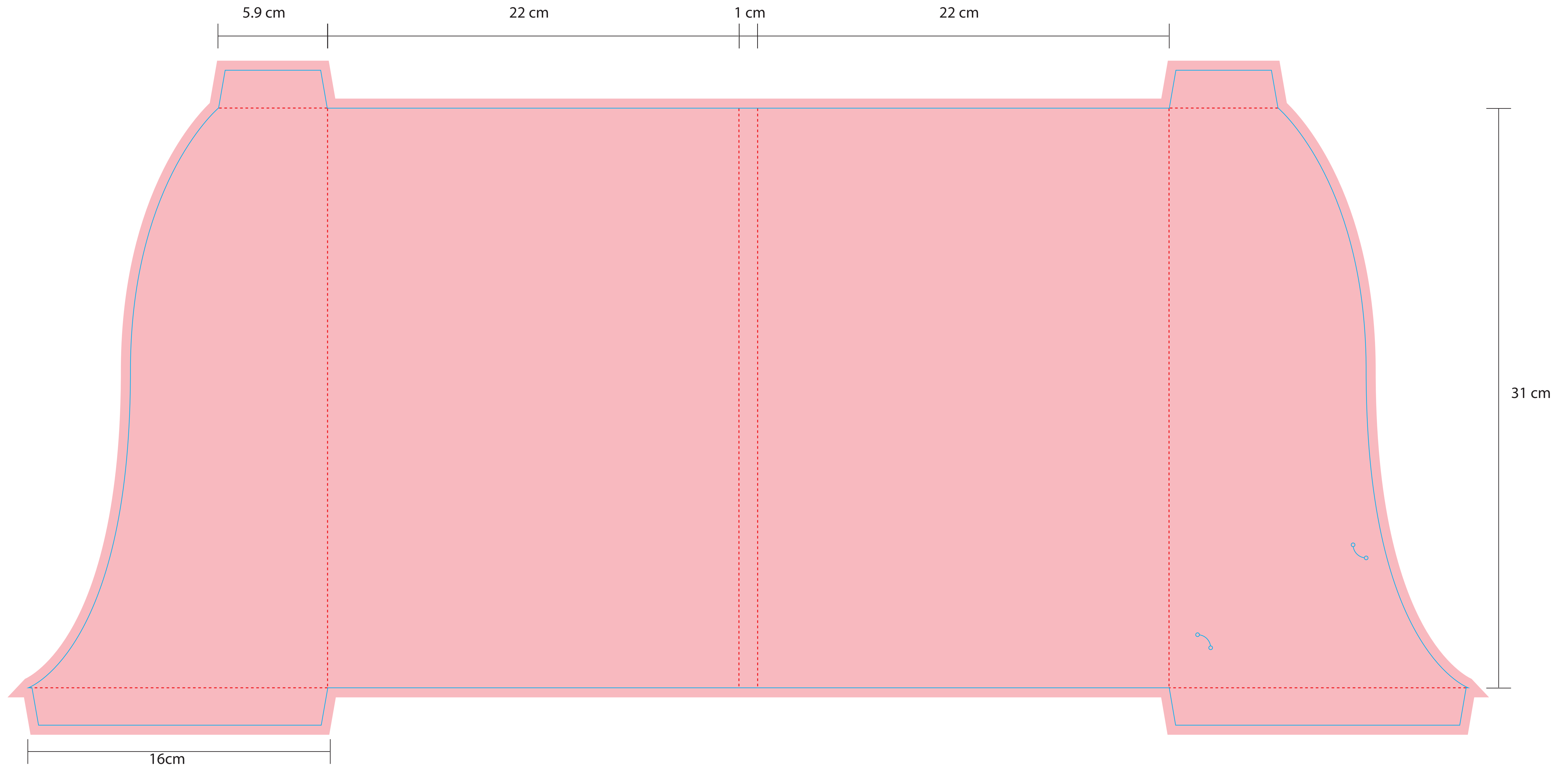
- Instructions :
- 1)Please make sure your artwork is the same size as the bleed layer (pink area).
 - 2) Contact our customer service team if you do not want to add card slot into your folder.
 - 3) Please do not erase the technical layer (Blue and red guidelines)
 - 4) After inserting your artwork, you may delete the bleed layer.
 - 5) The card slot has a fixed shape meant for business cards which are w9 x h5.5cm

Good luck!

When folder is closed size: (W) 22cm x (H) 31cm

Cover

To design only the outside/cover of the folder, use this template



Inside

To design inside of the folder,
use this template