

Instructions :

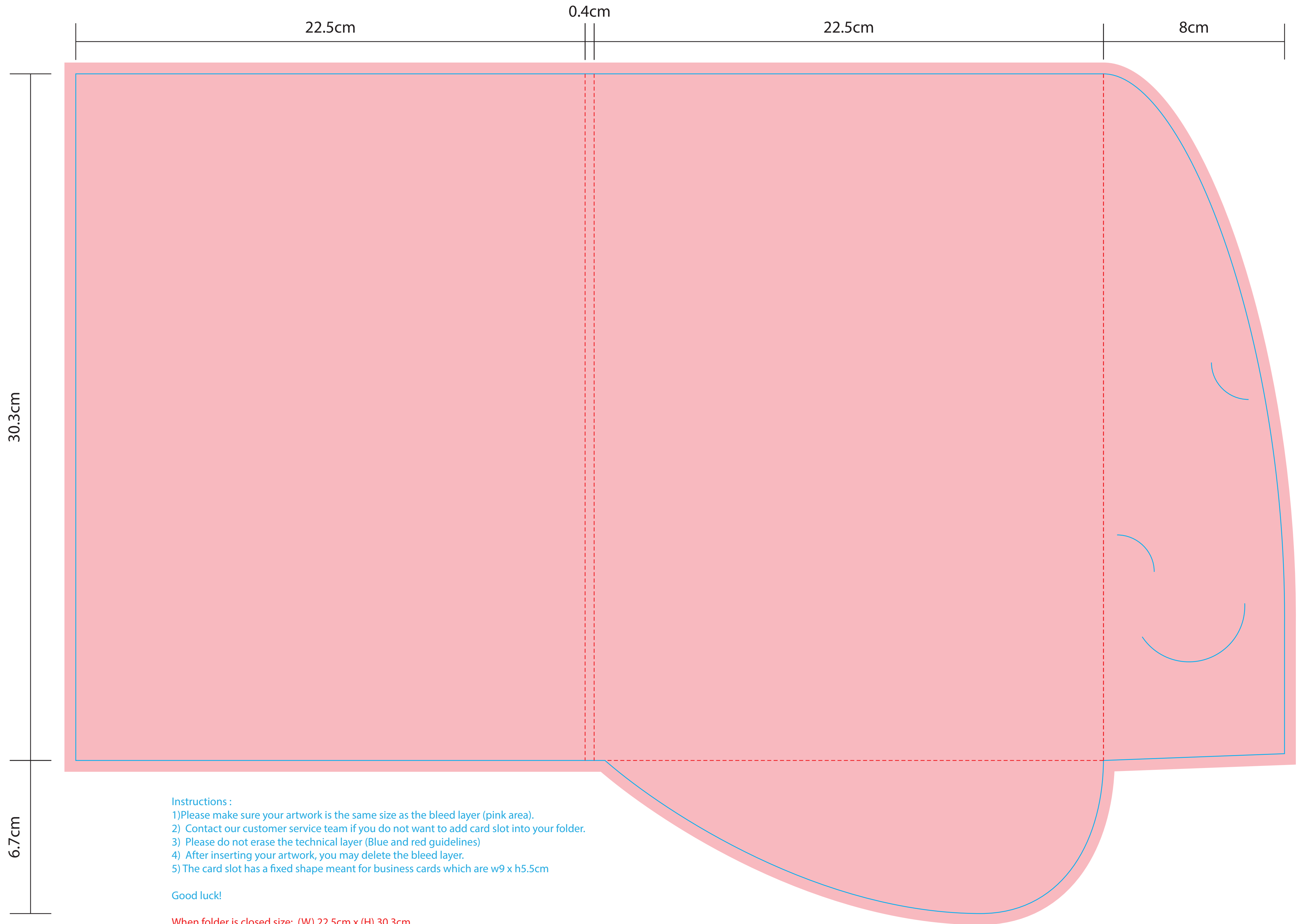
- 1) Please make sure your artwork is the same size as the bleed layer (pink area).
- 2) Contact our customer service team if you do not want to add card slot into your folder.
- 3) Please do not erase the technical layer (Blue and red guidelines)
- 4) After inserting your artwork, you may delete the bleed layer.
- 5) The card slot has a fixed shape meant for business cards which are w9 x h5.5cm

Good luck!

When folder is closed size: (W) 22.5cm x (H) 30.3cm

# Cover

To design only the outside/cover of  
the folder, use this template



# Inside

To design only the outside/cover of the folder, use this template